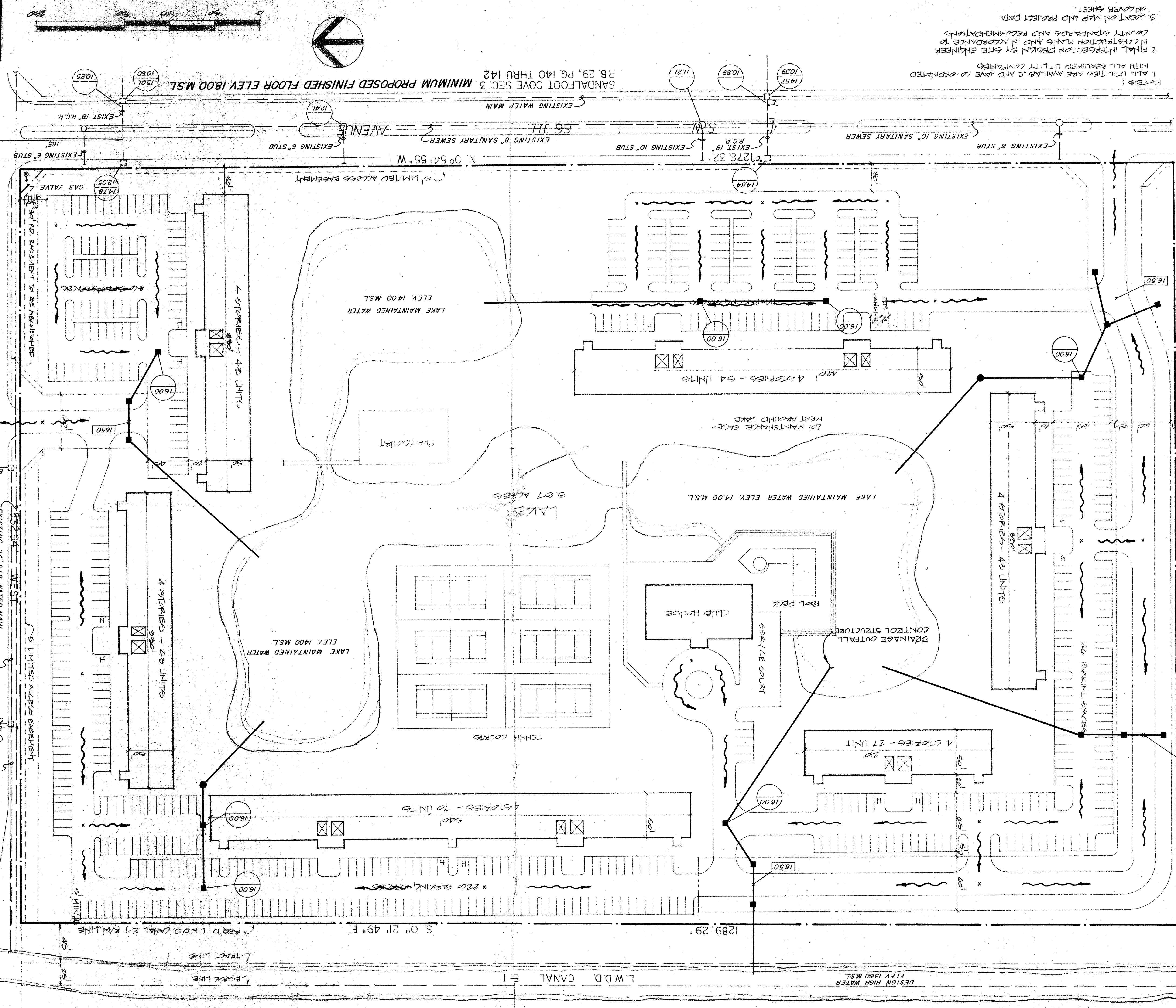


NOTES:  
1 ALL UTILITIES ARE AVAILABLE AND HAVE CO-OPERATED WITH ALL REQUIRED UTILITY COMPANIES.  
2 FINAL INTERSECTION DESIGN BY SITE ENGINEER IN CONSULTATION PLANS AND IN ACCORDANCE TO COUNTY STANDARDS AND RECOMMENDATIONS.  
3 LOCATION MAP AND PROJECT DATA ON COVER SHEET.



PLAT 1 OF BOCA RANCHO  
P.B. 35, PG. 176  
MAR 5 1980

PLAT 2 OF BOCA RANCHO  
P.B. 3, PGS. 73 & 74

EXIST. BOCA RANCHO DEVELOPMENT

**ROSSI AND MALAVASI ENGINEERS, INC.**  
WEST PALM BEACH, FLORIDA

**MASTER DRAINAGE PLAN**

BOCA RANCHOSOUTH DRAINAGE PLAN

SCALE: 1" = 40'

DATE	REVISION	BY
7/2/80		
7/2/80		
7/2/80		

**BOCA RANCHO SOUTH**  
PALM BEACH COUNTY, FLA.  
PREPARED FOR: BOCA RANCHO DEVELOPMENT CORP., BOCA RATON, FLA.

MEMBER OF ASSOCIATION OF PROFESSIONAL ENGINEERS AND ARCHITECTS

WEST PALM BEACH, FLORIDA 33401  
(305) 889-0714

**LEGEND**

- STORM INLET & LOCATION
- STORM PIPE
- TOP ELEVATION
- BOTTOM ELEVATION
- PROPOSED PAVEMENT
- PROPOSED ELEVATION
- DIRECTION OF FLOW